

IES Report

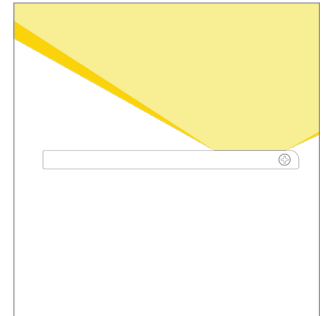
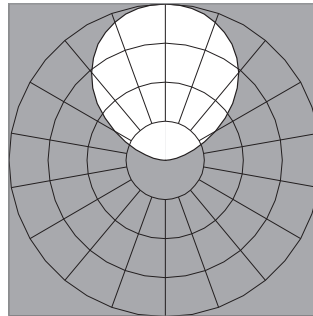
ZipThree® | 707 | Symmetric, uplight only | 80 CRI | LO

707-Z3-4-48-XX-XX-X-0-Z-LO-35-U1-X-XX-X

	2700K	3000K	3500K	4000K
Efficacy - Lumens per Watt	117	120	123	125
Total Lumens, 4' rail length (1219mm)	1792	1848	1886	1924
Lumens per foot (305mm)	448	462	472	481
Input Power (W), 4' rail length (1219mm)	15.4	15.4	15.4	15.4
Watts per foot (305mm)	3.9	3.9	3.9	3.9
CRI	85	85	85	85

Due to the large number of options in Vode's product offering, most Vode IES reports are factored reports prepared from source reports. Source reports are the IES test reports prepared for Vode by an NVLAP accredited photometric test laboratory. Factored reports are based on data from the Vode source reports.

If the data above is in black, it is directly from a Vode source report. If it is in grey, it is factored from Vode source reports. Reference details on Vode source reports can be found on the [IES File Finder](#) page on [vode.com](#).



IES Report

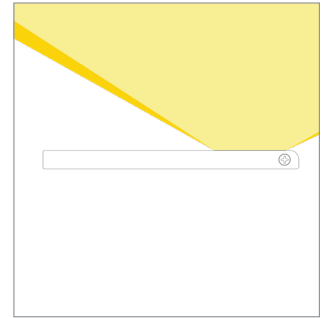
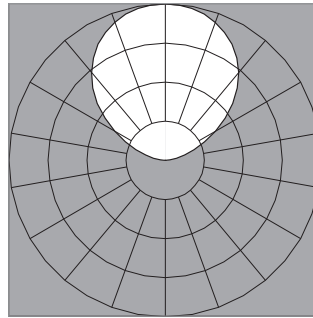
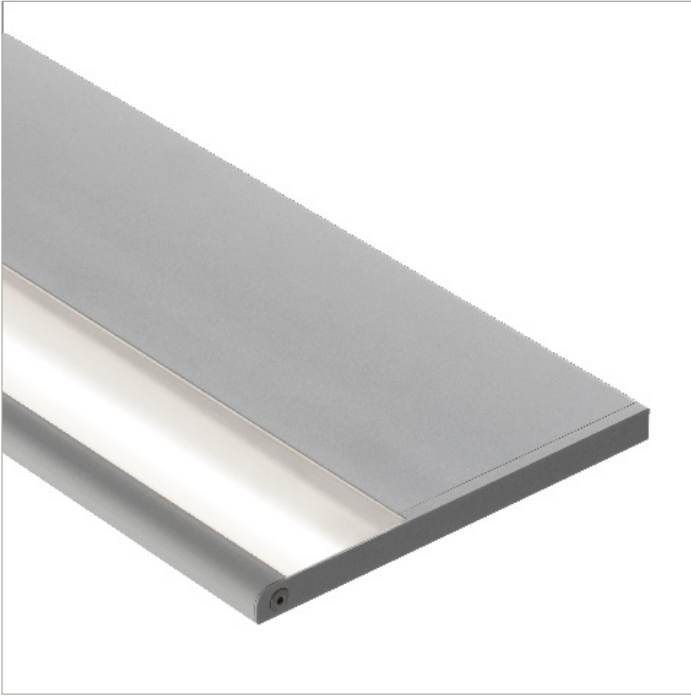
ZipThree® | 707 | Symmetric, uplight only | 80 CRI | SO

707-Z3-4-48-XX-XX-X-0-Z-SO-35-U1-X-XX-X

	2700K	3000K	3500K	4000K
Efficacy - Lumens per Watt	137	142	145	147
Total Lumens, 4' rail length (1219mm)	3584	3697	3772	3848
Lumens per foot (305mm)	896	924	943	962
Input Power (W), 4' rail length (1219mm)	26.2	26.2	26.2	26.2
Watts per foot (305mm)	6.6	6.6	6.6	6.6
CRI	85	85	85	85

Due to the large number of options in Vode's product offering, most Vode IES reports are factored reports prepared from source reports. Source reports are the IES test reports prepared for Vode by an NVLAP accredited photometric test laboratory. Factored reports are based on data from the Vode source reports.

If the data above is in black, it is directly from a Vode source report. If it is in grey, it is factored from Vode source reports. Reference details on Vode source reports can be found on the [IES File Finder](#) page on [vode.com](#).



IES Report

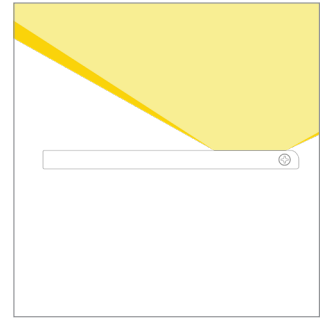
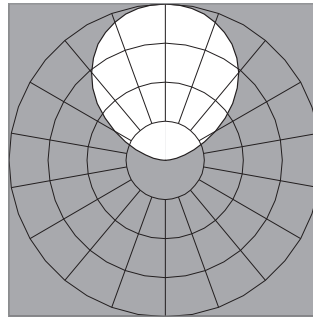
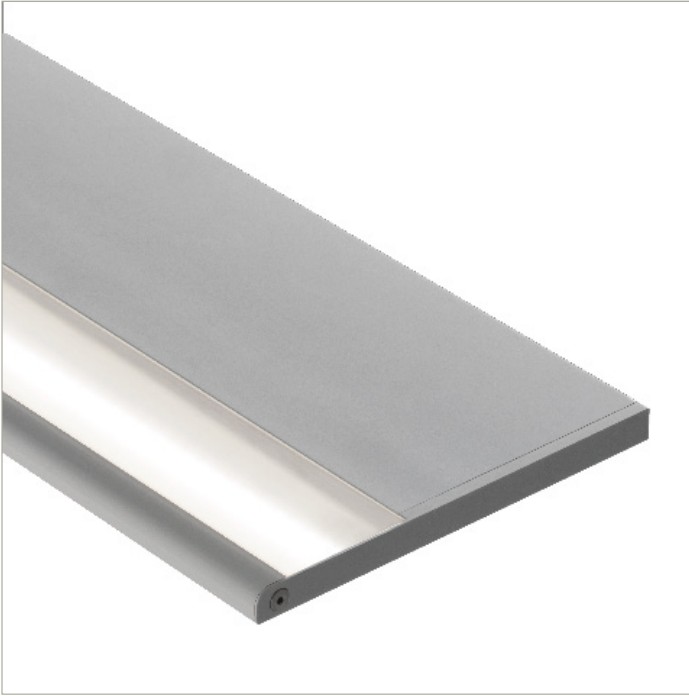
ZipThree® | 707 | Symmetric, uplight only | 80 CRI | HO

707-Z3-4-48-XX-XX-X-0-Z-HO-35-U1-X-XX-X

	2700K	3000K	3500K	4000K
Efficacy - Lumens per Watt	128	132	134	137
Total Lumens, 4' rail length (1219mm)	6809	7024	7168	7311
Lumens per foot (305mm)	1702	1756	1792	1828
Input Power (W), 4' rail length (1219mm)	53.6	53.6	53.6	53.6
Watts per foot (305mm)	13.4	13.4	13.4	13.4
CRI	85	85	85	85

Due to the large number of options in Vode's product offering, most Vode IES reports are factored reports prepared from source reports. Source reports are the IES test reports prepared for Vode by an NVLAP accredited photometric test laboratory. Factored reports are based on data from the Vode source reports.

If the data above is in black, it is directly from a Vode source report. If it is in grey, it is factored from Vode source reports. Reference details on Vode source reports can be found on the [IES File Finder](#) page on [vode.com](#).



IES Report

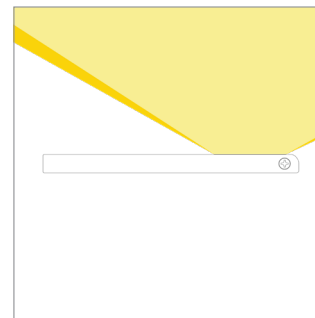
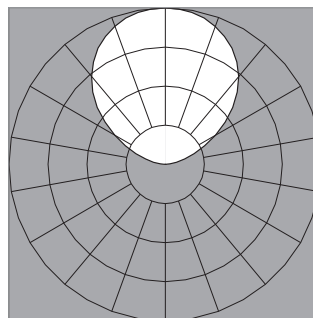
ZipThree® | 707 | Symmetric, uplight only | 90 CRI | LO

707-Z3-4-48-XX-XX-X-0-Z-LO-359-U1-X-XX-X

	2700K	3000K	3500K	4000K
Efficacy - Lumens per Watt	101	104	106	108
Total Lumens, 4' rail length (1219mm)	1545	1594	1626	1659
Lumens per foot (305mm)	386	398	407	415
Input Power (W), 4' rail length (1219mm)	15.4	15.4	15.4	15.4
Watts per foot (305mm)	3.9	3.9	3.9	3.9
CRI	96	96	96	96

Due to the large number of options in Vode's product offering, most Vode IES reports are factored reports prepared from source reports. Source reports are the IES test reports prepared for Vode by an NVLAP accredited photometric test laboratory. Factored reports are based on data from the Vode source reports.

If the data above is in black, it is directly from a Vode source report. If it is in grey, it is factored from Vode source reports. Reference details on Vode source reports can be found on the [IES File Finder](#) page on [vode.com](#).



IES Report

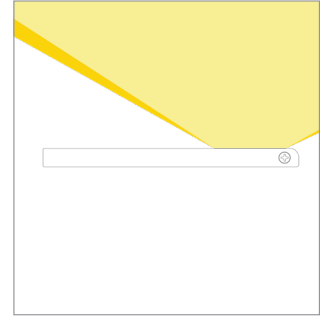
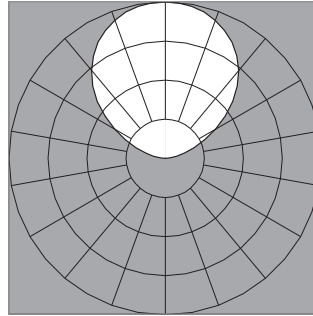
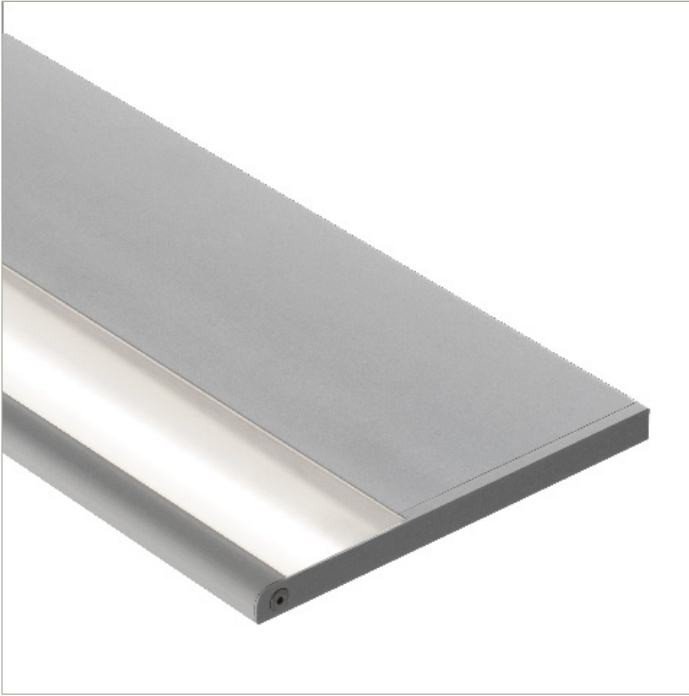
ZipThree® | 707 | Symmetric, uplight only | 90 CRI | SO

707-Z3-4-48-XX-XX-X-0-Z-SO-359-U1-X-XX-X

	2700K	3000K	3500K	4000K
Efficacy - Lumens per Watt	118	122	124	127
Total Lumens, 4' rail length (1219mm)	3089	3187	3252	3317
Lumens per foot (305mm)	772	797	813	829
Input Power (W), 4' rail length (1219mm)	26.3	26.3	26.3	26.3
Watts per foot (305mm)	6.6	6.6	6.6	6.6
CRI	96	96	96	96

Due to the large number of options in Vode's product offering, most Vode IES reports are factored reports prepared from source reports. Source reports are the IES test reports prepared for Vode by an NVLAP accredited photometric test laboratory. Factored reports are based on data from the Vode source reports.

If the data above is in black, it is directly from a Vode source report. If it is in grey, it is factored from Vode source reports. Reference details on Vode source reports can be found on the [IES File Finder](#) page on [vode.com](#).



IES Report

ZipThree® | 707 | Symmetric, uplight only | 90 CRI | HO

707-Z3-4-48-XX-XX-X-0-Z-HO-359-U1-X-XX-X

	2700K	3000K	3500K	4000K
Efficacy - Lumens per Watt	110	113	116	118
Total Lumens, 4' rail length (1219mm)	5870	6055	6179	6303
Lumens per foot (305mm)	1468	1514	1545	1576
Input Power (W), 4' rail length (1219mm)	53.6	53.6	53.6	53.6
Watts per foot (305mm)	13.4	13.4	13.4	13.4
CRI	96	96	96	96

Due to the large number of options in Vode's product offering, most Vode IES reports are factored reports prepared from source reports. Source reports are the IES test reports prepared for Vode by an NVLAP accredited photometric test laboratory. Factored reports are based on data from the Vode source reports.

If the data above is in black, it is directly from a Vode source report. If it is in grey, it is factored from Vode source reports. Reference details on Vode source reports can be found on the [IES File Finder](#) page on [vode.com](#).